



TIIG

INJURY SURVEILLANCE IN THE NORTH WEST OF ENGLAND

Injury attendances to Wythenshawe Hospital Emergency Department

October 2012 to September 2013

This report summarises recorded injury attendances to Wythenshawe Hospital Emergency Department (ED) between October 2012 and September 2013.

Between October 2012 and September 2013 there were 12,869 injury attendances to Wythenshawe Hospital ED. Males accounted for over half (53%) of all attendances. The month with the highest attendances was October (n=1,181) with August having the lowest attendances (n=990) (**Figure 1**). Falls (55%) accounted for the highest proportion of injuries, followed by sports injury (18%), road traffic collision (RTC) (16%), and burns and scalds and assaults (both 5%) (**Table 1**).

For all injuries the highest proportion of attendances were for persons aged 20 to 34 (24%) and 5 to 19 (22%) years (**Figure 2**). Over a third (34%) fall attendees were aged 65 or over. Approximately four in ten sports injury attendees were aged 5 to 19 years (36%) or 20 to 34 years (40%). Close to four in ten (39%) RTC attendees were aged 20 to 34 years (**Figure 3**).

Table 2 shows the ethnicity of injury attendees to Wythenshawe Hospital ED. The large majority (88%) were white.

The disposal of a patient can give an indication of the severity of the injuries sustained. Almost two-thirds (62%) of attendees were discharged, 19% were

referred and 16% were admitted to hospital (**Table 3**). Over four-fifths (82%) of RTC attendees were discharged. Four in ten (40%) of burns and scald attendees were referred for follow-up treatment. Four in ten (40%) of deliberate self-harm (DSH) attendees were admitted (**Table 4**).

Table 5 shows the arrival methods of attendances at Wythenshawe Hospital ED. Over a quarter (27%) arrived by ambulance.

Table 6 shows the incident location of injury attendances. Over a third (35%) occurred in the home whilst 7% occurred in a public place.

Table 7 presents data for assault attendances to Wythenshawe Hospital ED. There were 581 assault attendances recorded between October 2012 and September 2013. Seven in ten (70%) were male and over four in ten (44%) were aged 20 to 34 years. Over three in ten (31%) arrived by ambulance.

Figure 1: Wythenshawe Hospital ED: Total injury attendances by gender and month, October 2012 to September 2013

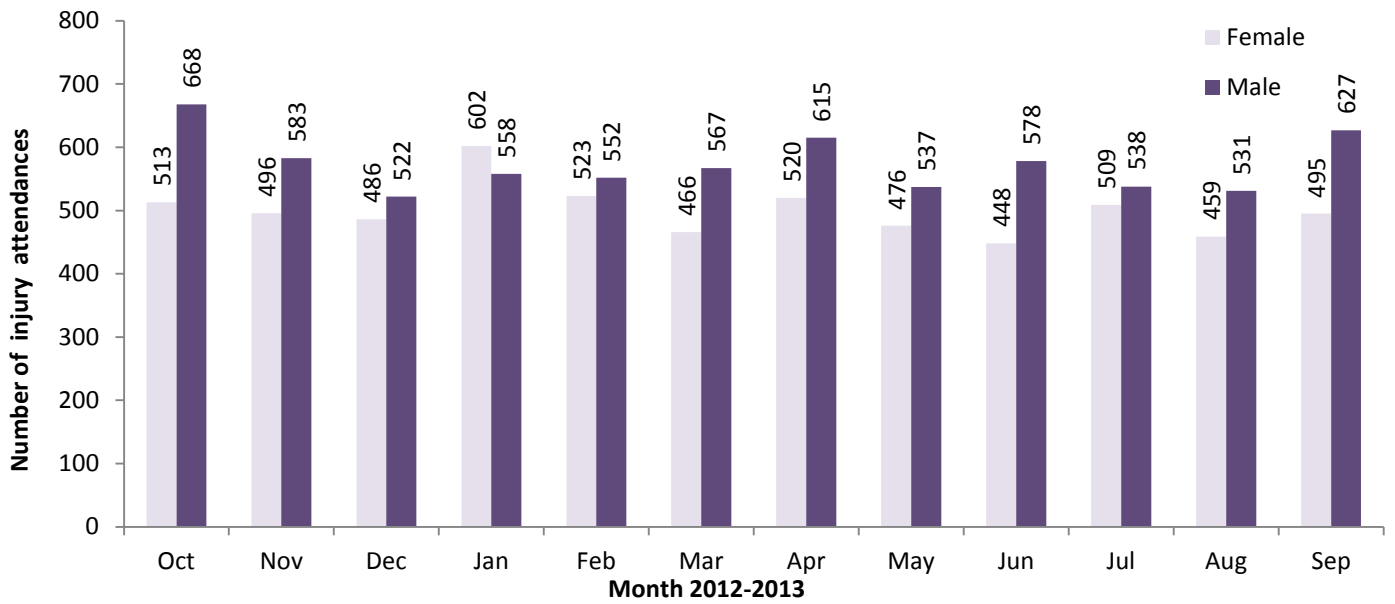
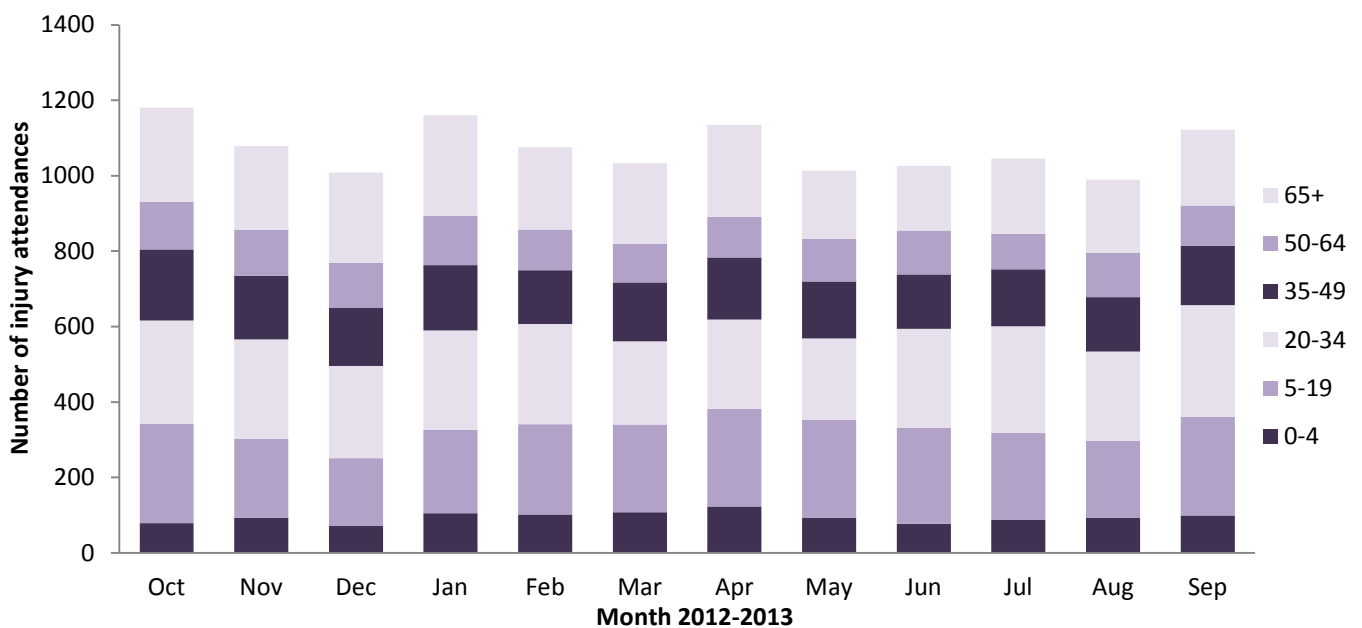


Table 1: Wythenshawe Hospital ED: Total injury attendances by injury group and month, October 2012 to September 2013^{1,2}

Injury group	Oct	Nov	Dec	Jan	Feb	Mar	Apr	May	Jun	Jul	Aug	Sep	Total	%
Fall	639	547	628	774	631	593	643	563	495	516	496	516	7041	55
Sports injury	223	205	110	134	200	178	199	186	223	196	191	259	2304	18
RTC	170	214	161	140	148	154	147	144	176	208	183	191	2036	16
Burn/Scald	38	36	37	38	45	51	69	67	62	73	47	40	603	5
Assault	73	45	55	62	41	49	48	42	39	39	47	41	581	5
DSH	<40	<35	<15	12	<10	8	24	<10	<30	<15	<25	13	218	2
Other injury	***	***	***	0	***	0	5	***	***	***	***	62	86	1
Total	1181	1079	1008	1160	1075	1033	1135	1013	1026	1047	990	1122	12869	100

Figure 2: Wythenshawe Hospital ED: Total injury attendances by age group and month, October 2012 to September 2013



¹ Please note that all numbers less than five have been suppressed in line with patient confidentiality and if there is only one number <5 in a category then two numbers will be suppressed at the next level.

² Please note, other injury attendances in September is higher than usual. This is because bites and stings has been added to the TIIG extract from Wythenshawe ED. Once we are able to provide a full years' worth of this data, it will be included in monthly reporting.

Figure 3: Wythenshawe Hospital ED: Total injury attendances by age group and injury group (excluding other injury), October 2012 to September 2013

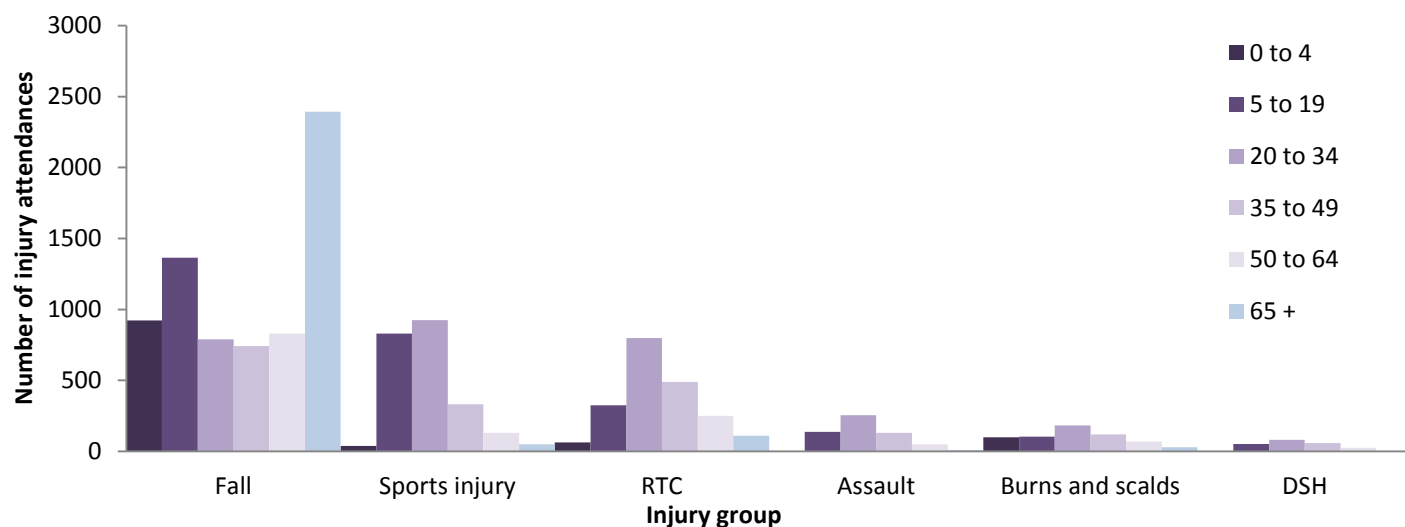


Table 2: Wythenshawe Hospital ED: Total injury attendances by ethnicity and month, October 2012 to September 2013^{3,4}

Ethnicity	Oct	Nov	Dec	Jan	Feb	Mar	Apr	May	Jun	Jul	Aug	Sep	Total	%
White	1039	955	883	1042	953	923	1002	880	909	935	867	975	11363	88
Pakistani	30	31	46	32	26	27	25	29	24	26	38	35	369	3
Not stated	30	25	22	21	29	17	26	25	19	16	18	21	269	2
Black	32	15	18	20	21	21	30	20	23	20	14	33	267	2
Mixed	13	19	10	16	12	16	11	10	18	19	18	22	184	1
Any other ethnic group	14	14	12	10	12	15	13	17	13	7	11	11	149	1
Indian	15	<10	***	13	16	7	11	13	14	16	9	14	140	1
Asian other	***	5	<6	***	<6	***	8	<10	***	8	<10	6	67	1
Not known	***	<6	9	***	***	***	<10	9	***	0	8	***	53	0
Chinese	0	***	0	0	0	0	***	***	***	0	***	***	8	0
Total	1181	1079	1008	1160	1075	1033	1135	1013	1026	1047	990	1122	12869	100

Table 3: Wythenshawe Hospital ED: Total injury attendances by method of disposal and month, October 2012 to September 2013⁵

Disposal	Oct	Nov	Dec	Jan	Feb	Mar	Apr	May	Jun	Jul	Aug	Sep	Total	%
Discharged	756	682	660	707	665	655	666	584	622	632	593	714	7936	62
Referral/follow-up	224	185	165	226	210	191	237	228	198	198	184	210	2456	19
Admitted	182	190	159	185	148	156	193	174	179	165	179	164	2074	16
Other	19	22	24	42	52	31	39	27	27	52	34	34	403	3
Total	1181	1079	1008	1160	1075	1033	1135	1013	1026	1047	990	1122	12869	100

Table 4: Wythenshawe Hospital ED: Total injury attendances by method of disposal and injury group (excluding other injury), October 2012 to September 2013⁵

Disposal	Assault		Burns and scalds		DSH		Fall		RTC		Sports injury		Total	
	n	%	n	%	n	%	n	%	n	%	n	%	n	%
Discharged	361	62	310	51	95	44	3947	56	1679	82	1483	64	7875	62
Referral/follow-up	106	18	241	40	25	11	1365	19	104	5	600	26	2441	19
Admitted	92	16	38	6	88	40	1567	22	167	8	115	5	2067	16
Other	22	4	14	2	10	5	162	2	86	4	106	5	400	3
Total	581	100	603	100	218	100	7041	100	2036	100	2304	100	12783	100

³ Please note that all numbers less than five have been suppressed in line with patient confidentiality and if there is only one number <5 in a category then two numbers will be suppressed at the next level

⁴ White=Irish, British, other white background; Mixed=white and black, white and Asian, mixed any other; Black=African, Caribbean, other black.

⁵ Admitted=admitted to ED bed/became a lodged patient of the same health care provider; Discharged=discharged - did not require any follow-up treatment; Referral/follow-up=discharged - follow-up treatment to be provided by GP, referred to ED clinic, referred to fracture clinic, referred to other out-patient clinic, transferred to other health care provider, referred to other health care professional; Other=died in department, left department before being treated, left department having refused treatment, other.

Table 5: Wythenshawe Hospital ED: Total injury attendances by mode of arrival and month, October 2012 to September 2013

Arrival mode	Oct	Nov	Dec	Jan	Feb	Mar	Apr	May	Jun	Jul	Aug	Sep	Total	%
Not known	837	798	720	851	794	764	819	743	758	770	694	876	9424	73
Ambulance	344	281	288	309	281	269	316	270	268	277	296	246	3445	27
Total	1181	1079	1008	1160	1075	1033	1135	1013	1026	1047	990	1122	12869	100

Table 6: Wythenshawe Hospital ED: Total injury attendances by location of incident and injury group (excluding other injury), October 2012 to September 2013⁶

Location	Assault		Burns & scalds		DSH		Fall		RTC		Sports injury		Total	
	n	%	n	%	n	%	n	%	n	%	n	%	n	%
Home	153	26	374	62	104	48	3826	54	0	0	0	0	4457	35
Sport	15	3	<10	1	***	0	289	4	0	0	2304	100	2615	20
Not recorded	125	22	122	20	85	39	1228	17	0	0	0	0	1560	12
RTC	***	0	0	0	0	0	<40	1	2036	100	0	0	2074	16
Public place	144	25	21	3	21	10	757	11	0	0	0	0	943	7
Street	<70	11	***	1	0	0	227	3	0	0	0	0	296	2
School/college	20	3	<10	1	***	1	370	5	0	0	0	0	399	3
Work	20	3	55	9	0	0	154	2	0	0	0	0	229	2
Another's home	27	5	14	2	5	2	141	2	0	0	0	0	187	1
Bar/Pub	<10	1	0	0	0	0	<15	0	0	0	0	0	18	0
Club	***	1	0	0	0	0	***	0	0	0	0	0	5	0
Total	581	100	603	100	218	100	7041	100	2036	100	2304	100	12783	100

Table 7: Wythenshawe Hospital ED: Assault attendances by gender, arrival mode and age group, October 2012 to September 2013⁶

Injury type	Assault attendees (n=581)		All injuries % (n=12, 869)	
	n	%	%	
Gender				
Female	176	30	47	
Male	405	70	53	
Arrival mode				
Ambulance	180	31	27	
Other	401	69	73	
Age group				
0 - 4	***	0	9	
5-19	138	24	22	
20 – 34	255	44	24	
35 - 49	130	22	15	
50 - 64	49	8	11	
65 plus	<10	1	20	

Published November 2013
 Jennifer Brizell (TIIG researcher)
 Centre for Public Health, Faculty of Education, Health and Community, Liverpool John Moores University
 2nd Floor, Henry Cotton Campus, 15-21 Webster Street, Liverpool, L3 2ET
 Tel: 0151 231 4500 Email: j.s.brizell@ljmu.ac.uk
 Website: www.tiig.info (please note all data requests should be made through the TIIG website)
 Twitter: [@TIIG_CPH](https://twitter.com/TIIG_CPH)

⁶ Please note that all numbers less than five have been suppressed in line with patient confidentiality and if there is only one number <5 in a category then two numbers will be suppressed at the next level.